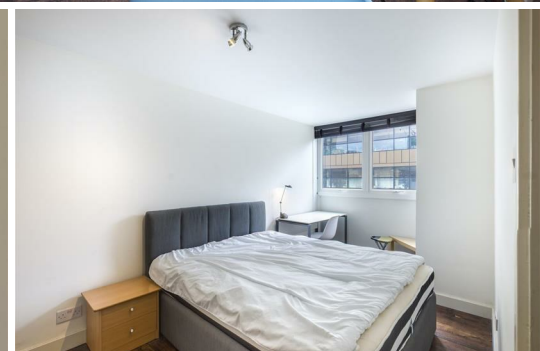
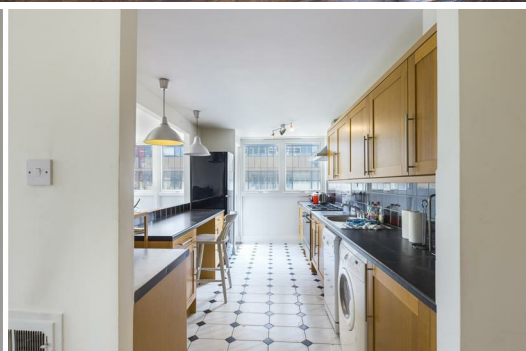


Flat in , W1W

**£550 Per Week**

**RentLondonFlat.com**  
*Making you feel at home*



## Key Features

- 2 SPACIOUS BEDROOMS
- LARGE WINDOWS
- WOOD LAMINATE FLOORING
- CAFE AND GROCERIES SERVICES NEARBY
- LARGE RECEPTION
- LOTS OF STORAGE
- SEPARATE WC
- SEPARATE KITCHEN
- COMMUNAL GARDEN
- EASY TRANSPORT TRAVELLING THROUGHOUT LONDON

## Description

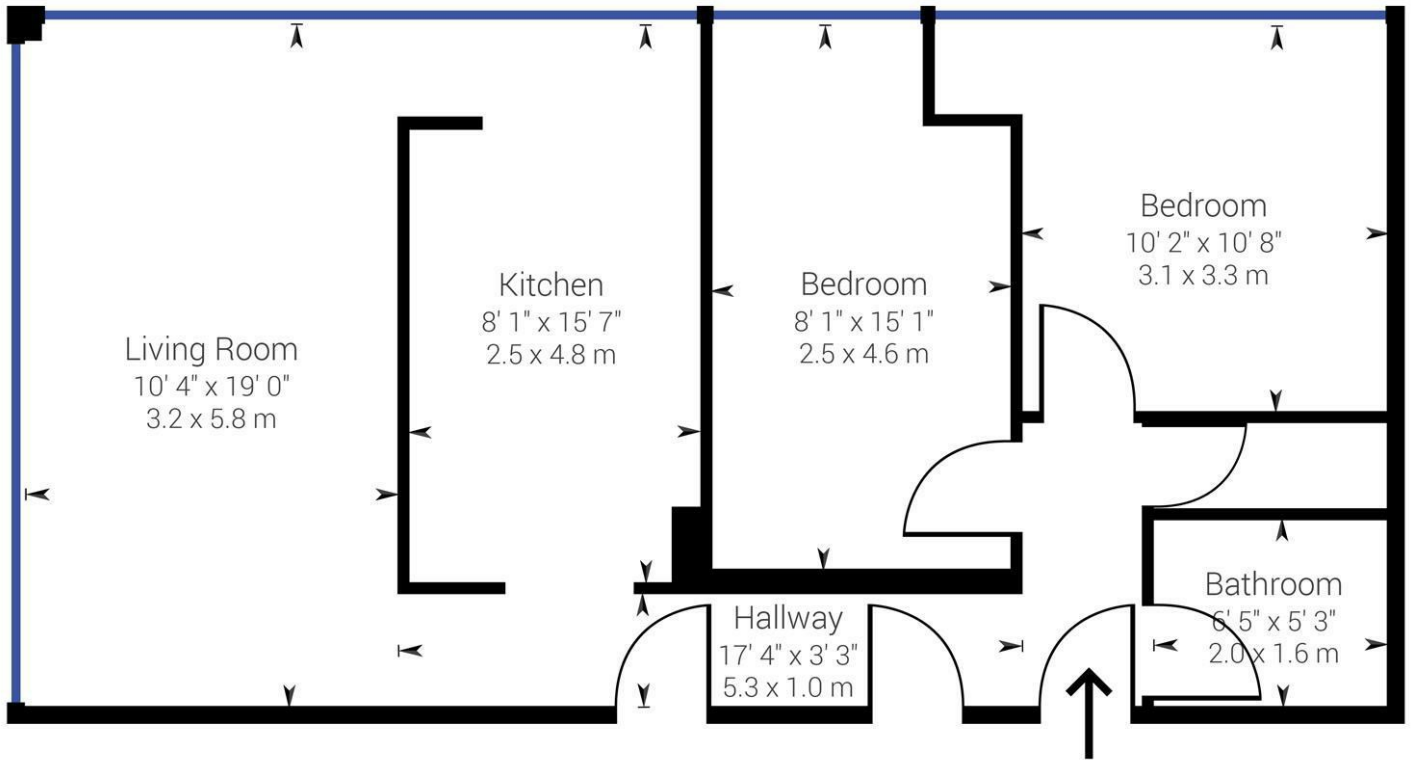
ZERO DEPOSIT AVAILABLE!

Located in the popular Holcroft Court in the heart of Fitzrovia the apartment comprises two double bedrooms, a good size reception room, a separate kitchen and a bathroom with bath and shower. Holcroft Court is a secure development with communal garden.

Clipstone Street is a popular residential area in pleasant Fitzrovia close to a wide range of excellent amenities including Oxford Street and Tottenham Court Road. Great Portland Street Underground Station (Circle, Metropolitan and Hammersmith and City lines) is close by for links into the City and the West End. Goodge Street Station and Warren Street are also within few minutes walk.

Long let. Subject to referencing and agreement.

## Floorplans



While every attempt has been made to ensure accuracy, all measurements are approximate, not to scale. This floor plan is for illustrative purpose only and should be used as such by any prospective tenant or purchaser.

**RentLondonFlat**.com  
Powered by Giraffe360

## About Us

For more properties or information about our services please visit our website [www.rentlondonflat.com](http://www.rentlondonflat.com). As London flat specialists, we buy, sell and manage flats for our clients across London. With our experience and insights we can advise you on what and where to buy the best property deals for your requirements, whether an owner occupier, investor or developer.

